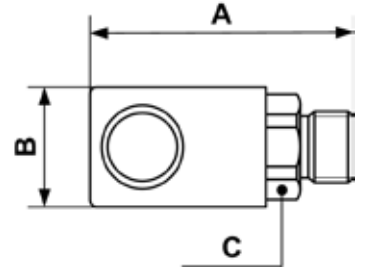


STAINLESS STEEL QUICK COUPLING - 1/4» INDUSTRIAL PROFILE



Male coupler - Stainless Steel

Profile : ISO 6150B



Min/max operating pressure 0 / 174 psi	Flow rate at 87 psi 28 CFM	ID passage 1/4"	Temperature min/max 5 / 158 °F
--	--------------------------------------	---------------------------	--

Part number	Male thread	Net weight (Kg)	Dim. A (inch)	Dim. B (inch)	Dim. C (inch)
PROXI 061151	G1/4	0,087	2.44	1.1	0.91
PROXI 061152	G3/8	0,087	2.44	1.1	0.91
PROXI 061153	G1/2	0,097	2.52	1.1	0.91